



FOR SALE

Montague Court, Hamlet Court Road, Westcliff-On-Sea SS0 7EX

£205,000 Leasehold

- Retirement Property for Over 60's
- First Floor Apartment
- South Facing Balcony
- Lounge & Dining Room
- Fitted Kitchen
- Two Double Bedrooms
- Lift Access
- Residents Parking
- **First 12 months Service Charges Paid**
- No Onward Chain

Selling & letting all types of property in Chalkwell,
Westcliff, Leigh, Southend and the surrounding areas.

appointmoor

Description

PUBLIC NOTICE

We advise that an offer has been made for the above property in the sum of £202,500

Any persons wishing to increase on this offer should notify Appointmoor of their best offer prior to exchange of contracts.

Superb first floor two double bedroom apartment in a

sought after retirement complex for the over 60's. Located close to the train station in Westcliff with sea glimpses and convenient for local amenities, this fantastic property offers a host of residential facilities including lounge, laundry, gardens, parking and lift to all floors. This apartment offers a spacious lounge with dining area and south facing private balcony, separate kitchen, two double bedrooms, three piece bathroom and ample fitted storage. Offered with no onward chain. ****First 12 months Service Charges Paid****

Entrance

Secure main entrance with ground floor resident facilities including laundry, lounge and gardens. Lift and stairs to all floors. Own front door into apartment.

Hall

Spacious hall with fitted carpet, three storage cupboards and doors to all rooms.

Lounge

Large lounge with fitted carpet, wall mounted heater, coving and double glazed door out to the south facing balcony. Opening to dining room and double doors to kitchen.

Dining Room

Dining room from lounge with fitted carpet, coving and double glazed window.

Kitchen

Fitted kitchen with double glazed window, vinyl floor and spotlights. Wall and base units with work surface, tiled splash backs and stainless steel sink & drainer. Integrated double eye level oven and space for under counter fridge & freezer.

Bedroom 1

Bedroom with south facing double glazed window, fitted carpet, coving and wall mounted heater. Fitted wardrobe with mirror folding doors.

Bedroom 2

Bedroom with south facing double glazed window, fitted carpet, coving and wall mounted heater.

Bathroom

Three piece bathroom comprising of WC, vanity wash hand basin and bath with over head shower and glazed screen.

Tenure

Leasehold - 108 Years Remaining

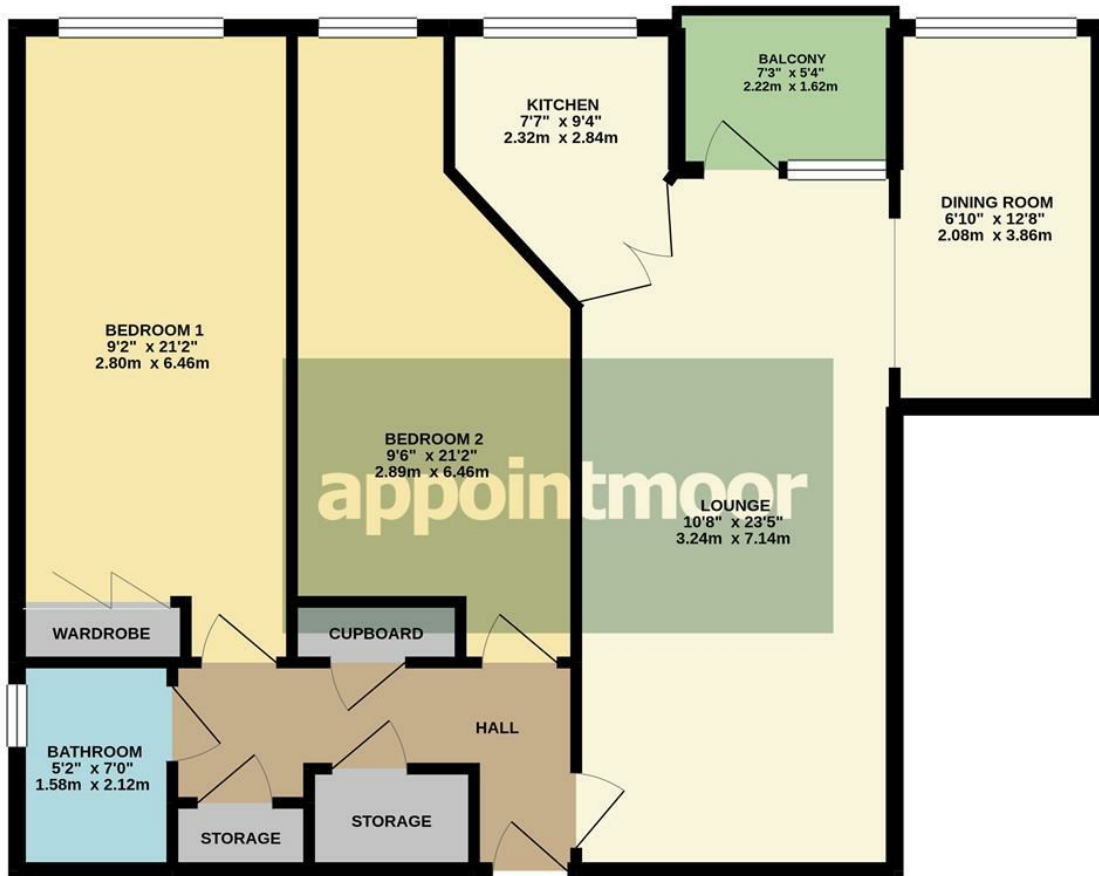
****First 12 months Service Charges Paid****

External

Pleasant communal garden and residents parking.

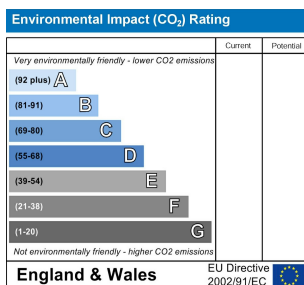
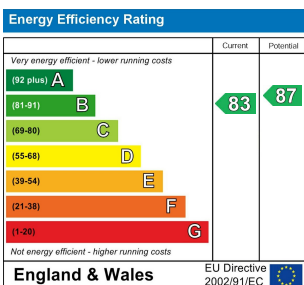


FIRST FLOOR 878 sq.ft. (81.6 sq.m.) approx.



TOTAL FLOOR AREA : 878 sq.ft. (81.6 sq.m.) approx.

Whilst every attempt has been made to ensure the accuracy of the floorplan contained here, measurements of doors, windows, rooms and any other items are approximate and no responsibility is taken for any error, omission or mis-statement. This plan is for illustrative purposes only and should be used as such by any prospective purchaser. The services, systems and appliances shown have not been tested and no guarantee as to their operability or efficiency can be given.
Made with Metropix ©2021



AGENTS NOTES: Appointmoor Estates Ltd as our Vendors Agents have endeavoured to check the accuracy of these sales particulars, but however, can offer no guarantee. We therefore must advise any prospective purchaser employ their own, independent experts to verify the statements contained herein. Floor plans are not to scale and only provide an indication of the layout. All measurements are approximate and should not be relied upon. No equipment, utilities, circuits or fittings have been tested. **VIEWINGS: BY APPOINTMOOR ESTATES ONLY**

appointmoor

Appointmoor Sales 72 The Ridgeway,
Chalkwell, Westcliff-on-Sea, Essex, SS0 8NU
T. 01702 719966 W. appointmoor.co.uk



facebook.com/appointmoor



Instagram.com/appointmoor_estate_agents



twitter.com/appointmoor



linkedin.com/company/appointmoor